



勇于创新，科技兴企

Company Profile

Hebei Hexing Electrical Machinery Co.,Ltd. Located in Hejian, Hebei province, is recognized from Hejian Hongqi Machinery Inc. Since established in 1983, we put all our efforts to design, produce, sale and serve for our customer. Our main products including Rigid Stranding machine, Tubular Stranding machine, Planetary Stranding machine, Bow Stranding machine, Laying-up machine, Drum Twister, Armouring machine and so on. Our products are widely used all over the world, and our brand "Hexing Electrical Machinery" "Hongqi machine" become famous in China. Now we are proudly of well-known brand and becoming the leading team in this field.

Our policy "Brave in Innovation, Rely on Technology". We are insisting to bring in advanced technology from abroad and doing systematic expansion over these years. We gradually develop an experienced mechanical and electronic research team, with the ability of independent design and large-scale production

Depend on many years production and service experiences, we gradually creative new technology and improving our products, our machine has sold all around China, and also sold to America, Russia, Vietnam, India, and Africa, etc. Good technical support and after-sale service, win perfect customer response from China and aboard.



公司简介

河北合兴电工机械有限公司位于河北省河间市，是国内电工机械专用设备和钢丝绳捻制设备行业的重要制造商。

自1983年开始，得益于社会经济的快速发展，依靠广大客户的关心和支持，合兴公司专注电工机械行业的研究与开发，获得了多项国家专利认证。不断深耕进步，日益发展壮大，现已在国内外电线电缆专用设备制造行业的研发和制造领域处于重要地位，并在钢丝绳捻制设备行业崭露头角。秉承“专业制造、创新研发、真诚服务”的经营方针，努力建设成为国内外一流的电线电缆专用设备制造商和领先的钢丝绳捻制设备制造商而奋斗。

近四十年来，凭借多年服务于线缆行业的丰富经验，合兴公司不断创新、升级成品线，向国内各地以及美国、俄罗斯、巴西、印度、哈萨克、韩国、越南、泰国等30多个国家和地区的客户，提供高品质的产品、强有力的技术支持和完善的售后服务，是国内外客户值得信赖的合作伙伴。





合兴电工机械
创新驱动
品质至上



合兴电工机械
创新驱动
品质至上

合兴电工机械
Hexing Cable Machinery

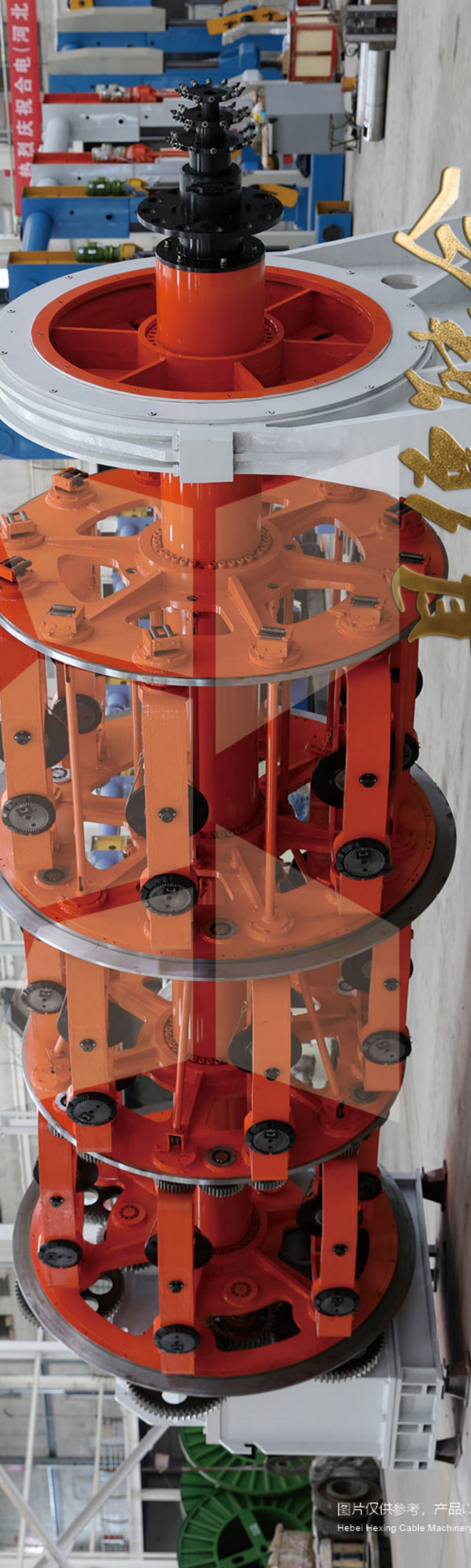




合兴电工机械



兴
道
方
才
道
合
兴



兴
道
方
才
道
合
兴



合兴电工机械



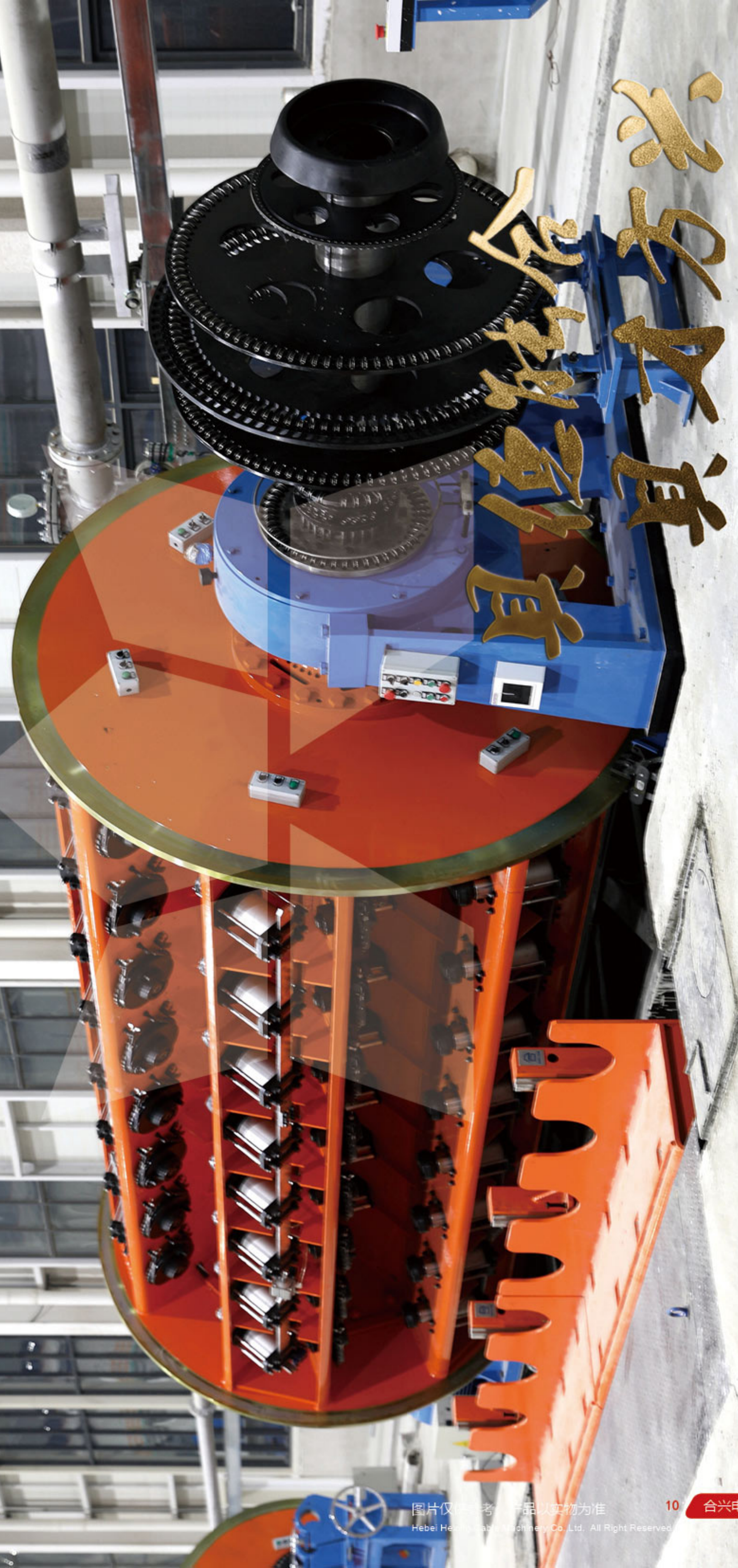
合兴电工机械



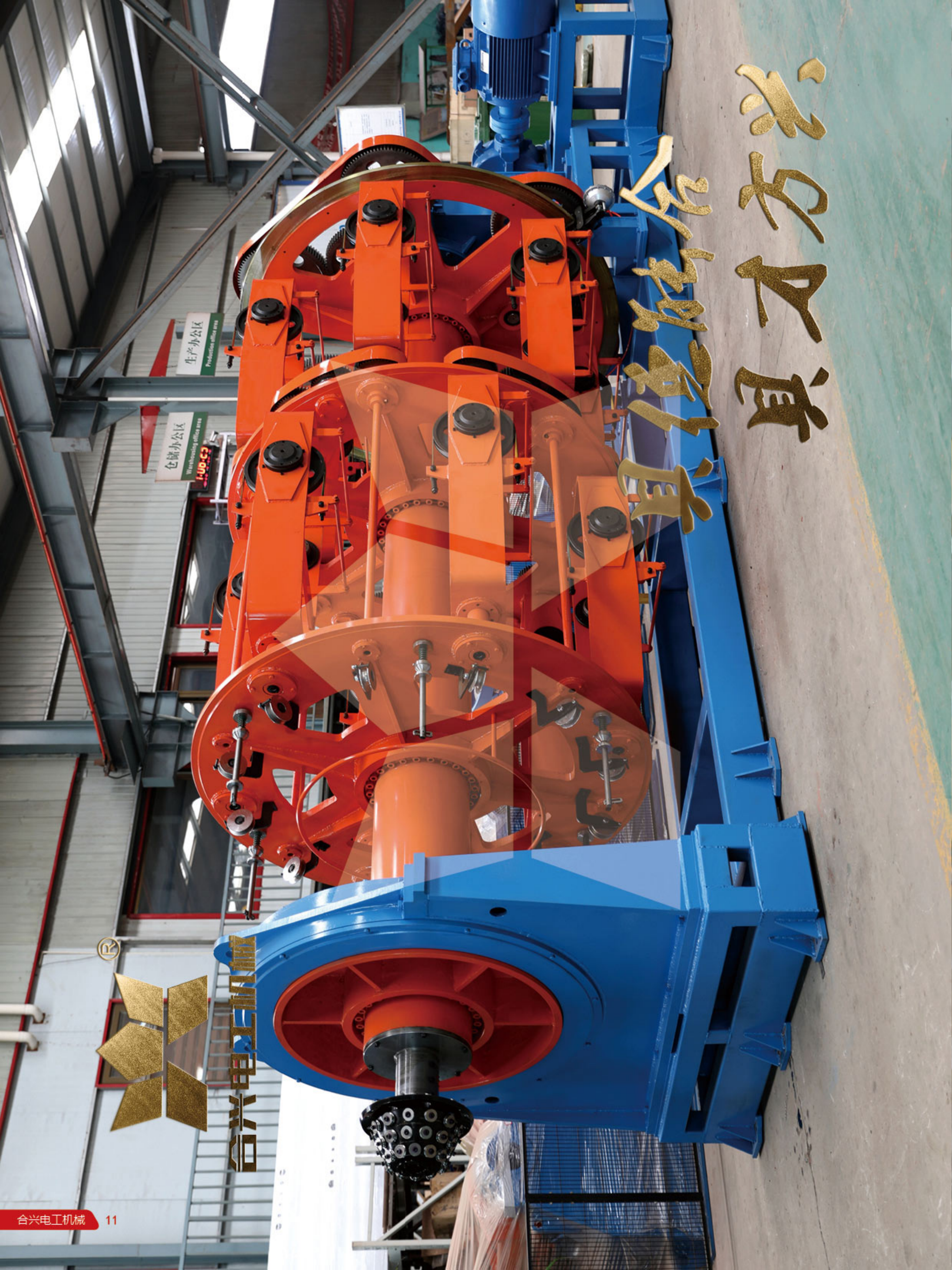
兴道 智造 融合



合兴电工机械



兴道 智造 融合



兴
道
方
自
道
德
融
合



合兴电工机械



兴
道
方
自
道
德
融
合



合兴电工机械

框绞机—单盘上盘

Rigid Stranding Machine- Manual Loading

产品用途 Application

本机主要适用于裸铝、裸铜线及钢芯铝绞线的扇形圆形导体绞制、紧轧、拉拔及单芯预成型紧轧等产品的绞合。

This machine mainly used for aluminum, copper and ACSR shaped or round conductor stranding, compacting, drawing and single-core preforming processing.

设备组成 Component

中心放线、框绞主机、并线模座、紧轧模座、牵引装置、收排线装置、电控系统、传动系统。

Central pay off, stranding cage, assemble holder, compact holder, traction device, take-up and traverse device, electrical control system, and transmission system.



技术参数 Technical Parameter

绞合单线直径 Single wire Dia.	铜 CU: $\varnothing 1.2-5.0\text{mm}$ 铝 AL: $\varnothing 1.5-5.0\text{mm}$
绞合最大截面 Max. section square	铜 CU: 500mm^2 铝 AL: 630mm^2
笼绞最高转速 Max. Rotation speed	234r/min
绞合节距 Stranding Pitch	377-860mm
最大牵引线速度 Max linear speed	66.45m/min
框架内放线盘规格 Pay-off in cage	PND500、PND630
牵引轮规格 Capstan	$\varnothing 2000\text{mm}$
收线盘规格 Take-up	PN1600mm-2500mm

框绞机—整体侧下方上盘 Rigid Stranding Machine- Side Bottom Auto Loading

产品用途 Application

主要适用于生产大长度裸铝、裸铜线及钢芯铝绞线的扇形导体绞制、紧压、圆形导体绞制及分割导体等电力电缆线芯绞合的生产。

This machine mainly used for making large length of aluminum, copper and ACSR shaped conductor stranding, compacting, and round conductor stranding and shaped spiral wire production.

驱动形式 Driving form

地轴式和分电机式

Earth-axis or individual motor driving



技术参数 Technical Parameter

绞合单线直径 Single wire Dia.	铜 Cu: $\varnothing 1.5-5.0\text{mm}$ 铝 Al: $\varnothing 1.8-5.0\text{mm}$
笼绞最高转速 Cage RPM	230r/min
绞合节距 Stranding Pitch	44-1011mm
最大牵引线速度 Max linear speed	60m/min
框架内放线盘规格 Pay off in cage	PND630/710
牵引轮规格 Capstan	$\varnothing 2000\text{mm}$
收线盘规格 Take-up	2500mm

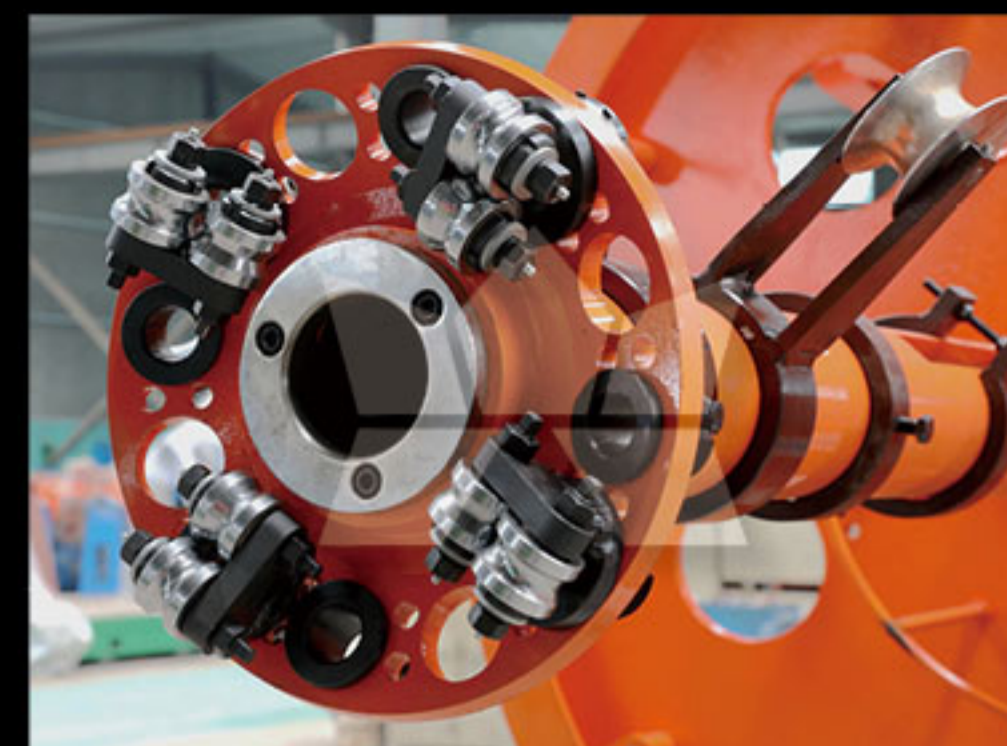


成缆机 Laying up machine

产品用途 Application

该系列产品适用于各种截面的多芯电力电缆、交联电缆、控制电缆的成缆、装铠之用。还可用于充电桩电缆的制作。

The machine is used for stranding or armouring all kinds of different crosslinking cable, power cable, control cable and charging pile cable production process.



高速型技术参数 Big bearing type Technical Parameter

规格型号 Model	1250	1600
高速型主机转速Cage RPM(r/min)	50	40
高速型绕包、装铠转速Taping RPM (r/min)	625	625
出线速度 linear Speed (m/min)	77	65

常规型技术参数 Normal type Technical Parameter

规格型号 Model	1250	1600	2000
进线直径 Inlet wire Dia. (mm)	8-30	10-40	15-70
成缆直径 laid up Dia. (mm)	80	120	140
主机转速Frame rotation speed (r/min)	50	40	30
成缆节距 Lay-up Pitch(mm)	181-3198	369-6646	400-6766
绕包、装铠转速 Taping speed (r/min)	625	625	550
绕包、装铠节距 Taping pitch(mm)	14.3-236.3	16-273	11-179
牵引轮直径 capstan Dia.(mm)	2000	2500	履带
出线速度 linear Speed(m/min)	6.00-44.41	6.78-51.21	3.53-26.86

笼绞机 Planetary Stranding Machine

产品用途 Application

主要供绞制控制电缆、铜股线、钢芯铝绞线、铜绞线、铝绞线的制造之用。同时，也是大平方钢绞线、钢丝绳制造的必备设备。

The machine is used for stranding control cable, copper cores, ACSR, aluminum and copper conductor, and also needed for making big section of steel stranded wire and steel wire ropes.

设备组成 Component

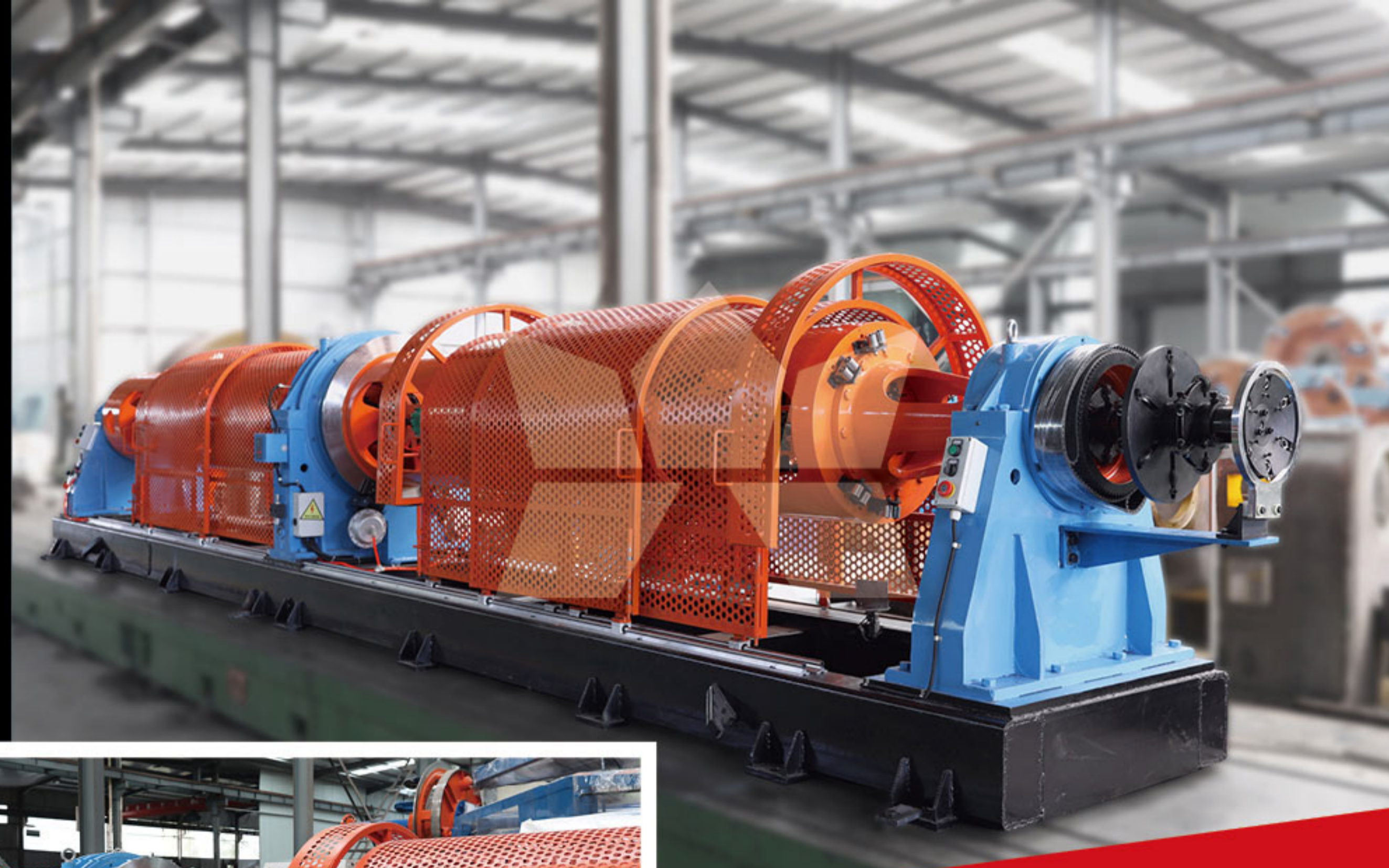
中心放线装置、6、12、18、24、30盘主机、并线模座、绕包机、装铠机、牵引装置、收排线装置、传动系统及电器系统等。

Central pay-off device, mainframes of 6-bobbin, 12-bobbin, 18-bobbin, 24-bobbin and 30-bobbin, die holder, taping device, armouring device, traction, take-up and traverse device, transmission system and electric control system.



技术参数 Technical Parameter

型号 Model	400	500	630
进线直径 Inlet wire Dia.(mm)	7	10	12
绞笼最高转速 Cage RPM(r/min)	100	95	75
绞线节距范围Stranding Pitch(mm)	43-766	41.47-732.10	50.2-900.5
绕包头转速 Taping Speed(r/min)	625		
绕包节距 Taping Pitch(mm)	8.7-144.3		
钢带头转速Rpm of armouring head	550		
钢带头节距 Pitch of armouring head	8.7-144.3		



技术参数 Technical Parameter

型号 Model		400	500	630
进线直径 Inlet wire Dia.(mm)	导体 Conductor	1.5-3.5	1.8-4.0	2.0-5.0
	钢 Steel	1.0-2.5	1.5-3.0	1.8-4.0
	股线 Cores	1.2-3.5	1.5-5.0	
主机转速 Frame rotation speed(r/min)		800	700	500
绞线节距 Stranding Pitch(mm)		41-312	44-334	
出线速度 Linear Speed(m/min)		27-205.3	22-166.85	14-108.9
牵引轮直径 Capstan Dia.(mm)		800	1000	1200
收线盘规格 Size of take-up bobbin		PN1250	PN1600	PN1600

管绞机 Tubular Stranding Machine

产品用途 Application

专供铜绞线、铝绞线、钢绞线、钢芯铝绞线及钢丝绳绞制之用。配以绕包，还可用于绝缘线芯成缆和部分控缆的绞合。

This high speed machines mainly used for stranding copper wire, aluminum wire, steel wire, ACSR and wire rope. Accompanied with taping head, it can used for insulation cores and some control cable stranding process.

设备组成 Component

中心放线架、管绞主机、绕包机（选）、牵引装置、收排线装置及电器系统。

Central pay-off, cage host, taping device (optional), capstan, take-up and traverse device, and electric control system.



盘绞机 Drum Twister

产品用途 Application

本系列设备主要用于大截面、大长度电力电缆的绞合成缆。可用于圆形或扇形线芯的绞合成缆，还可进行钢带、钢丝铠装或铜丝屏蔽等。

This machine mainly used for stranding large section or long length power cable, and can produce round or sector cable. It also can be used for armouring steel belts or wire and copper shield process.

设备组成 Component

旋转式放线架、导线装置，汇线导棍、填充架、钢丝放线架、钢丝装铠头、并线模座、绕包装置、旋转式气动牵引、盘绞式收线架、传动系统及电器系统。

Rotary pay-off, guiding unit, assembling roller, filling stand, steel wire pay-off unit, steel wire armouring head, die holder, taping unit, rotary caterpillar, drum stranding pay-off, transmission system and electric control system.



技术参数 Technical Parameter

型号 Model	JPD - 2500	JPD - 3150
收线盘规格 Size of take-up bobbin	PN2500	PN3150
成缆外径 Cable OD(mm)	120	140
成缆节距 Cable pitch(mm)	200-8000	
金属、非金属绕包 Metal/Non-metal taping	转速 Speed(r/min)	625
	节距 Pitch(mm)	19-250
	带宽 Width(mm)	20-60
绞体转速 Stranding Speed(R/min)	40	35
出线速度 Producing Speed(m/min)	55	40

钢丝装铠机 Steel Wire Armouring machine

产品用途 Application

该系列设备主要用于各类线缆及光缆的单层或双层钢丝装铠之用，也可用于大规格钢丝绳制造之用。

The machine is used for armouring single or double steel wire around the cable, or manufacturing large section of steel wire ropes.

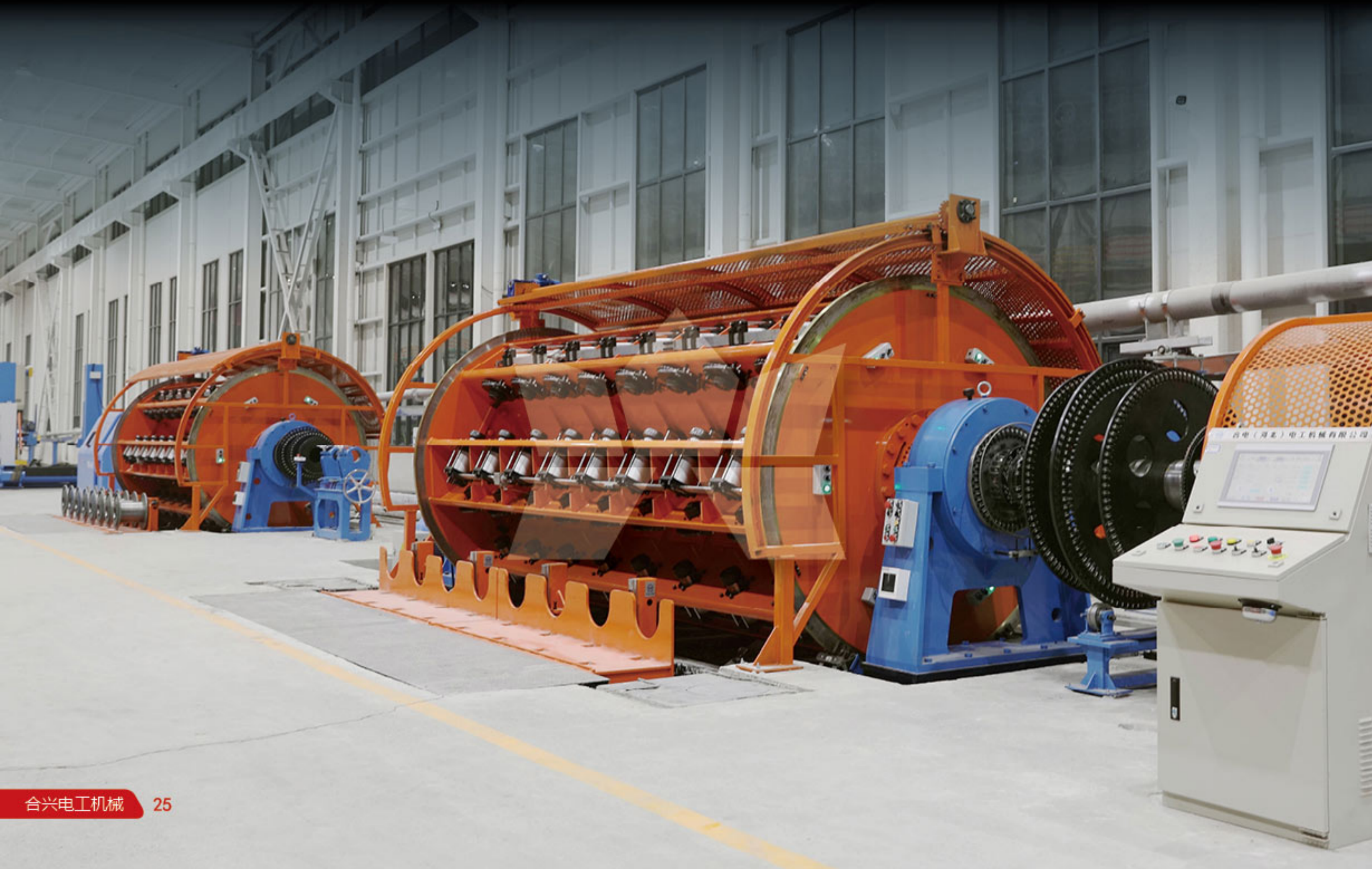
设备组成 Component

中心放线、装铠主机、并线模座、绕包装置、牵引装置、计米器、收排线装置、传动系统、电气系统。

Central pay-off, armouring cage, die holder, taping device, traction device, meter counter, take-up and traverse device, transmission system and electric control system.

技术参数 Technical Parameter

型号 Model	36+36	48+48
单丝直径 Single Wire diameter (mm)	1.0-4.0	1.0-4.0
装铠直径 Armouring Dia.(mm)	120	140
主机转速 Rotation speed(r/min)	21-51	18.5-41.1
装铠节距 Armouring Speed(mm)	74.1-1275.9	84-1404
绕包转速 Taping Speed(r/min)	188-419	188-419
绕包节距 Taping pitch(mm)	9.0-144.2	8-138
线速度	3.77-27.18	3.43-25.93





弓绞机 Bow type stranding machine

产品用途 Application

用于导体绞合、电缆线芯成缆。具有速度高、噪音低的特点。

This machine used for conductor stranding, wire cores laying-up. With features of high speed and low noise.

设备组成 Component

中心放线、弓形主机、并线模座、填充装置、非金属绕包机、牵引装置、收排线装置、电气控制系统、安全防护罩。

Component: Central pay-off stand, bow type stranding cage, assembling die holder, filling rope stand, non-metallic taping machine, traction device, take-up with traverse, electrical control system, and safety protection system.

技术参数 Technical Parameter

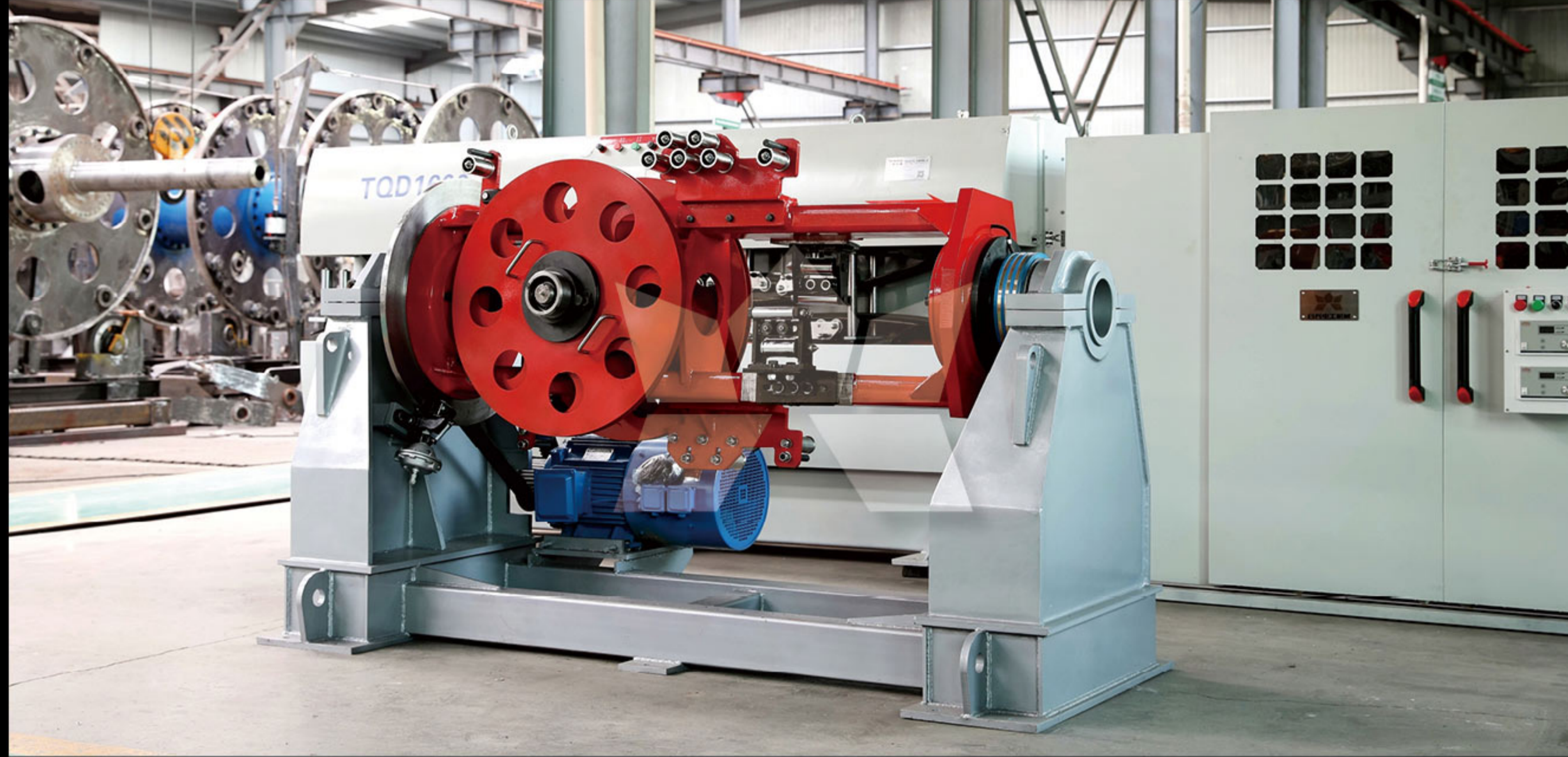
线盘尺寸 Bobbin size(mm)	绞体最高转速 Max. rotating speed(rpm)	线芯最大外径 Max. OD. of core(mm)
Φ630	800	Φ8
Φ1250	200	Φ20
Φ1600	160	Φ25



案例展示 Products show



辅机 Auxiliary machine





生产现场

Our processing equipment



超长专用卧式车床



数控火焰切割



大型折弯机



退火炉



动平衡



数控线切割



龙门铁床



镗床



立式车床